

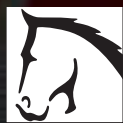


LOGIC

Products for *all* Seasons



agriculture



equestrian



gamekeeping



forestry



municipal

www.logic.gb.com



1
UET RANGE 1500 x 1000 x 80mm (base unit). Top quality Kit Trailer for easy self assembly, or factory built. The basic platform has many uses and can be extended with 380mm low sides for general use or 800mm high sides for livestock. All Logic off-road trailers are fitted with quality; timber floors, stub axles and bead lock wheel rims for added safety.



2
STT RANGE 1500 x 1000 x 380mm. Low sided, very strong, all welded construction is the ideal general purpose trailer. 420mm extension sides are available to carry livestock, together with mesh or solid panel headboard and choice of tailgates. Inset shows **RTT RANGE** – Road legal version for general or livestock transportation, choice of wheels and mudguards.



3
SST RANGE (1500mm long) 1500 x 1000 x 800mm. High sided livestock trailer - all welded construction, extremely durable, should still be the same after 10 years use - our most popular model. Choice of wooden ramp, mesh side hinged or half door ramp tailgates. Mudguards available on all single axle trailer models.



4
SST RANGE 1800mm long. The same construction as the standard SST range only longer at 1800mm, this allows good use of the optional Logic Stockgate System for partitioning the generous carrying area. The gates can be removed in seconds or parked flush with the sides for maximum internal space. Inset (left) shows road legal option, inset (right) shows tandem axle option.



5
SMT 120 1500 x 1160mm. A compact monocoque body with tremendous strength, narrow overall width and good stability. Ideal for woodland use or on mountain tracks for deer husbandry etc. Anywhere the ATV will go the SMT should follow.



6
SDT 400 1500 x 1000 x 420mm. All steel heavy duty tipping trailer. Designed for hard work - very simple tipping system, ideal for stones, bricks, logs etc. Inset picture shows 22 x 11 x 8 turf tyre option **WT510**.



7
TGT 400 1500 x 1000 x 800mm. Tipping high sided trailer, tapered for easy emptying. The tailgate doubles as a loading ramp for mowers, wheel barrows etc., an ideal general purpose trailer for grass clippings or stable manure etc.



8
OXT Range 2250 x 1310 x 300mm. Off road trailers. Ideal for carrying materials or stock. Main photo shows OXT400TA model with solid headboard, mesh high sides, stock tailgate and internal lambing gate. Inset shows OXT800 low sided trailer with ladder rack and low tailgate. See photo 11 for other models.



9
DST RANGE 1970 x 1400mm. A large flat bed trailer with standard ladder rack and optional 300mm drop sides. Huge carrying area - good for bags or bales, easy loading height - ideal for garden nurseries, pig units etc. Extension sides available. Inset shows road legal version. Choice of tyres.



10
LBT TIPPING BALE TRAILER designed to self-load, carry and tip hay and straw round bales. Ideal for equestrian units and livestock farms, maximum load 600kg.



11
XT Range 2250 x 1310 x 300mm road legal trailers to suit a wide range of applications. Featuring maximum strength and durability with minimum unladen weight. Ideal for transporting an ATV and then used behind ATV off road. Main photo shows XT740 trailer fitted with solid headboard, mesh high sides and Logic style loading ramp tailgate. Inset left shows solid side option. Inset right shows XT610E fitted with XT106 ramp tailgate.



12
SXT Range 2995 x 1310 x 300mm road legal trailer, similar to XT range but with a drop down headboard and optional front bar which gives it a total body length up to 3500mm. Ideal for carrying a 6 wheeled ATV, Garden Tractors or 2 smaller ATVs such as sports or childrens models.



13
ZT RANGE 2250 x 1310 x 300mm. A general purpose trailer with the added features of a longer drawbar and a headboard and tailboard that fold flat to allow longer goods/materials to be transported when required. This clever design gives the user a compact, manageable trailer with on-demand extra capacity as it is needed. (Inset shows headboard detail.)



14
VT RANGE 2995 x 1750mm. Designed for road transportation of Utility Vehicles with ability to be used behind vehicle for off road use with an option of fitting flotation wheels for wet conditions. Available with choice of rail sides (inset picture) or solid sides to 300mm high. Spec includes jockey wheel, overrun brakes, rear prop stands and loading ramp.

15



MFP FLAIL MOWER RANGE 1.05m, 1.2m & 1.5m cutting widths available. Suitable for general paddock use, orchards, road side verges, lawns, footpaths, creating fire breaks in heather. Engine sizes and different wheel configurations to suit all applications are available. Flail mowers offer a major benefit of mulching the cut grass which is distributed over the whole width of the machine for even breakdown. Inset shows flotation wheel option for difficult or wet conditions.

16



FLAIL MOWERS – REAR WHEEL OPTION reduces the overall width allowing closer cutting to walls, fences, trees etc. All features offered on standard wheel flail range such as offset drawbar, are incorporated. N.B. Rear wheel option significantly increases weight on drawbar. Please ensure towing vehicle is suitable. A jack is provided to assist hitch attachment and removal.

17



TRM120 – ROTARY MOWER RANGE a more conventional economical option for grass cutting which is suitable for general topping and ideal for frequent use on paddocks etc. Features triple blades, cutting height range from 20mm – 175mm with quick and simple height adjustment and an offset drawbar facility. A remote throttle and safety kill switch are fitted as standard. Inset shows standard wheel option.

18



TCH100/200 TRAILED CHAIN HARROWS combine a 1.2m or 1.8m chain link web, with a spring-assisted raise and lower frame, supplied complete, or frame only to retro fit existing webs. This enables reversing into corners, lifting the web to clear trash and an easy means of transporting to different sites. Inset shows **CH100/200 CHAIN HARROWS** available in 1.2m or 1.8m widths.

19



MSC120 HORSE MUCK / SWEEPER COLLECTOR picks up wet and dry leaves, grass cuttings and litter etc. **MSC120 HORSE MUCK COLLECTOR** cleans up horse droppings and 'grooms' grazing areas, providing cleaner more productive conditions. Features include 1.2m working width, winch to assist emptying, offsettable drawbar, 5.5hp engine, remote throttle and easy start clutch. Inset working on AstroTurf. Inset right shows wild flower/grass seed harvester variation.

20



LSH200 SUPER HARROW features Einbock™ technology which pioneered organic weeding and plant stimulation. Grass paddocks are rejuvenated by the action of combing, to aerate the soil surface and remove dead grass. The 2.0m width allows fast work rates and features adjustable tine settings for various conditions and easy transport. This model comes with a 12V electric ram for remote and simple raise and lower and can be used behind all types of vehicles.



LSS110E SEED SPIDER™ is a precision seeder designed for sowing various seeds eg. Grass seed mixtures. It's electronic metering system can handle a wide range of seed types. Hardened chisel point openers allow direct seeding in grassland, ideal for patching worn paddocks etc. Inset shows **LSS110E** sowing an arable crop. They are easy to use and have workrates of up to 1 Ha/hr.



PG250 MANEGE GRADER provides quick, easy and efficient levelling of all types of surfaces including equestrian training arenas. Comes with a **perimeter plough** which is opened to pull in material built up against the side boards and an optional **wheel track levelling kit** (inset) which allows 'one pass' grading. An option of a single row of specially designed tines (shown) is beneficial and recommended for certain surfaces such as rubber chip.



LTA160 TERR-ATOR is designed to help those areas that never seem to grow much grass due to feet paddling, poor drainage or capping of the top surface. It produces slits in turf to allow air down to grass roots, breaks up any compacted top soil and generally boosts grazing availability. With repeated use it will produce a tilth for seed sowing. Inset shows blade detail.



BR150 BALLAST ROLLER 1.5m. Liquid weight can be added to a maximum gross weight of approx 600kg, adjustable to suit ground conditions. Features include large 560mm dia heavy wall section drum for easy towing, 50mm dia axle, long life sealed bearings and adjustable rear scraper.



CTF250 CONTACT 2000 2.5m wide, offers a revolution in contact weed control. It features a unique contra-rotating brush application that provides excellent plant contact due to its "combing" action, with bristles retaining high levels of chemical. Only targeted weeds are treated resulting in tremendous cost savings. Inset shows gang options, 5m and 7.5m are possible.



CONTACT 2000 CTF150 1.5m wide, suitable for smaller areas or where space is limited e.g. woodland nursery management, field margins, lakeside areas and footpaths etc. Inset shows **CTF906 DRAWBAR MOUNTING KIT** for **OBS60** ltr sprayer allowing Contact 2000 use behind any suitable towing vehicle.

27



OBS640H 60ltr capacity spot sprayer. Its unique design allows quick and simple mounting with easy operation and maintenance. Supplied with 10m of hose and hand lance on a wrap around bracket. The 12 volt electric pump works from the ATV battery and produces up to 4.5 ltrs/min at 3 bar (40psi) which is plenty for use with a hand lance and 10 m of hose. The pump has a built in recirculation facility to ensure excess pressure does not build up.

28



OBS640S 60ltr capacity sprayer with the same features as the OBS640H but with a return system to allow for use with booms up to 4 nozzles and hand lance use. One of our most popular units, cost effective and ideal for spot controlling weeds in grassland, around field hedges and buildings. This unit is also ideal for **Contact 2000** (Pic 25). Inset shows **OBS116** 2 outlet manifold for easy connection of 2 accessories, e.g. boom and hand lance.

29



OBS690S 60ltr capacity sprayer with 9ltr/min at 3 bar (40 psi) pump and full pressure control system, operates hand lance and boom options up to 3.5 metres with all the specification of a full sized conventional sprayer. Very easy to attach, use and maintain.

30



OBS134S 135ltr capacity On Board Sprayer with 12 volt 4.5ltr/min at 3 bar (40 psi) pump, hand lance and boom options up to 2 metres (4 nozzles). This 'one piece' unit is mounted very quickly and allows easy operation and maintenance.

31



OBS135S 135ltr capacity On Board Sprayer with 12 volt 9ltr/min at 3 bar (40 psi) electric pump, also features full pressure control including regulating valve, pressure gauge and agitation/tank return mixing facility giving correct spraying application for all hand lance and boom options up to 3.5m. Inset shows easy access to on/off valve and pressure regulator with pressure gauge.

32



OBS610 FRONT TANK 60ltr capacity, can be added to any of the Logic OBS Sprayer range to increase carrying capacity and improve ATV stability by balancing out weight distribution. Attachment is easy using the conventional 'T' bolts or by using straps.



33
DMSXXX DECK-MOUNTED SPRAYER 270 ltr capacity, provides an excellent value for money sprayer suitable for small / medium sized areas. 12 volt 9ltr/min or 4.5ltr/min pumps are available for options of conventional spraying up to 7 nozzles (3.5m) or spot spraying with hand lance, plus boom use up to 4 nozzles (2m). Inset top shows 3 point linkage version for Compact Tractor use. Inset bottom shows UTV use.



34
3-POINT LINKAGE MOUNTING FRAME suitable for use on Compact tractors etc, provides a platform to mount any of the OBS sprayer range or electrobroadcasters as well as a general carrying area. This simple system is very easy to operate and increases the versatility of many vehicles.



35
OBS107 boom fitted to **TS400S** trailed sprayer (also see picture 51) This nozzle can spray one side up to 3.5m and is ideal for working between established or newly planted trees and spraying steep ground such as railway embankments. The nozzle provides an accurate and even coverage over the ground but has the flexibility of not having to have a fixed boom. Inset shows a close up of the Nozzle. A Minimum of 9 ltr/min pump is required to run this nozzle.



36
OBS BOOMS range from 1.5m (3 nozzle) to 3.5m (7 nozzle). The 3m and 3.5m booms are double folding with 2 breakback clutches. The main photo shows a OBS104 3m boom being used with only the 2 end nozzles and hedgerow nozzle being used to spray a field margin. All booms come with a hedgerow nozzle fitted to one side. Inset shows 1.5m boom which is rigid with single central breakback clutch.



37
 OBS Options include **OBS113 / 114 HANDLANCE** c/w with 10 or 15m of hose and wrap around bracket. **OBS112PH HOSEREEL** c/w 15m hose and hand lance. **OBS 610 BOOM/ HOSEREEL BRACKET**, suitable for OBS 60 series. **AE500 WIRING HARNESS**, c/w on/off switch. **ATV110 RATCHET STRAPS**, **ATV112 SPRAYLINE REPAIR KIT**. **OBS116 2 OUTLET MANIFOLD** (see inset picture 28).



38
EBC-TFL80/80P ELECTRO BROADCASTERS spreads grass and rape seed, herbicide granules, fertiliser, grain and slug pellets. Hopper capacity is 85ltr, spread patterns adjustable, range of spread up to 24mtrs. Options include manual or powered on/off control and ATV mounting kit. Game feeder version available. (see page 11 inset picture 66). Inset shows alternative mounting.

39



SYSTEM 20 CHASSIS offer a facility to quick attach front mounted equipment to suitable ATVs. The chassis can remain on the ATV without impeding normal use, most models quick attach in seconds. Raise and lower of mounted equipment is normally by over centre lever, but electric lift rams are also available.

40



S215 POWER BRUSH is ideal for rapid cleaning of roads, yards, grain stores, footpaths, parks and sports fields. The unit is 1.35m wide with special end brush, adjustable left or right, with accurate height control and 5.5hp engine.

41



S221 SNOWPLOUGH 1.4m wide with rubber wearing strip. This model can be angled either way and has been designed to be used with ATVs to provide fast snow clearing. Ideal for yards, roadways, car parks and footpaths but can also be used on soft surfaces like playing fields.

42



UTS201 SNOWPLOUGH 1.8m wide for use with a UTV or large ATV. Features a rubber wearing strip with the ability to angle either way and also includes a breakback facility to cope with hidden objects etc.

43



S210 YARDSCRAPER suitable for cow sheds, cubicle houses, pig units, poultry units and building sites etc. 1.3m wide, heavy duty one piece blade. Replaceable bottom and wing strips. Manual lift or electric ram option available.

44



FRONT MOUNTED SWEEPEX BRUSH In 1.2 or 1.5m width offers a simple robust solution that is ideal for cleaning horse yards, driveways, vehicle yards, grain stores, etc. The unit has a simple, quick attachment and raise/lower system so large areas can be covered quickly and efficiently.

45



SYSTEM 40 Universal chassis used with an ATV provides an ultra low ground pressure unit suitable for early application work using existing tractor mounted equipment. Shown here with single and tandem axle options, adjustable track from 1524 to 1829mm (60" to 72") available with 5.5hp standard drive engine or reverse drive with centrifugal clutch. Offsetting drawbar is an option for row crop work.

46



S406 TRAILER BODY fitted to a single or tandem axle chassis turns this combination into a really useful general haulage trailer, 1970 x 1160 x 300mm well capable of carrying 500Kg. Extension sides are available for carrying livestock.

47



SYSTEM 40 Single axle chassis fitted here with an Avadex TMA4 applicator provides an ultra L.G.P. unit for use in soft conditions. System 40 chassis can be supplied Road Legal making an ideal unit for large farms or contractors.

48



SYSTEM 40 chassis single axle, fitted with a twin disc fertiliser spreader. Mounted on a simple X member with height adjustment, provides secure installation, correct operating settings and good stability. The 5.5hp engine can be supplied with standard drive or reverse drive with centrifugal clutch.

49



SYSTEM 40 TANDEM AXLE fitted with fertiliser spreader driven by either standard or reverse drive engine provides a unit capable of working in very soft conditions as well as improved stability on steep or rugged conditions. Removal of spreader for tractor use can be carried out in a few minutes.

50



SYSTEM 40 TANDEM AXLE with 12m sprayer shows the low centre of gravity when fitted at axle height. Tandem axle provides very good stability, most important when turning with liquid loads and when travelling over rough ground. Kits can be supplied to bring the operating controls within easy reach.

51



TS400S TRAILED SPRAYER combines all the specifications of a conventional sprayer with the economy of a simple 270 ltr capacity tank. Ideal for small and medium sized areas. 12 volt 9ltr/min at 3 bar (40 psi) pump operates booms from 0.5 to 3.5metres. Other options include handlance and hosereel.

52



TS500/600 SPRAYERS based on the well proven Hardi sprayer together with design features to ensure maximum flexibility, low weight and low centre of gravity. The sprayer can be used on a tractor or mounted as a front tank with adapter kit for larger tractor mounted sprayers. 12m booms standard. Inset right shows drawbar and engine fitting to pump. Inset left shows **VC500** trailed fertiliser spreader

53



LDS240 (240 ltr capacity) fertiliser spreader (wheel size 18 x 9.50 - 8). Ideal for medium size paddocks. Supplied with hopper lid. Inset shows **LDS120** as LDS240 but with a 120 ltr hopper and 16 x 6.50 - 8 wheels.

54



LDS380 (380 ltr capacity) takes the spreader range into a suitable size machine for using on farms. This model is ideal behind larger ATVs and many acres can be covered quickly. Fitted with 18 x 9.50 - 8 wheels.

55



LDS700 capable of easily taking a half tonne bag of fertiliser with space to spare. Fitted with 20 x 11 - 8 flotation wheels for use on wet ground. Optional hopper cover available for LDS380 and LDS700.

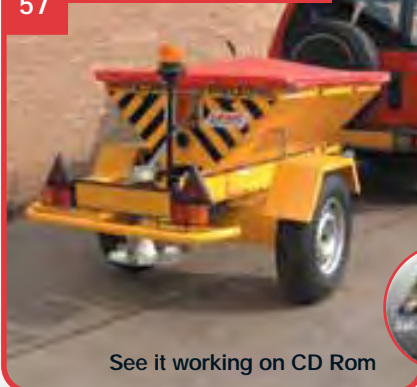
All models feature: ground wheel drive, spread width up to 15m, facility to select disc drive and open output whilst seated on ATV, translucent plastic hopper (to allow user to see fertiliser level) and galvanised frame for long life.

56



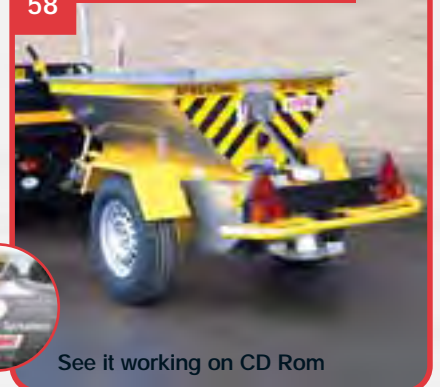
LDS120DS SALT SPREADER Simple 120 ltr spreader for use with **bagged dry salt only**. Suitable for lower usage where the **GDS200** spreaders cannot be justified. Spreading widths between 8 - 12m which is ideal for roadway and car park coverage. For contractor use see the **GDS200** range.

57

GDS200 Range (Painted)

See it working on CD Rom

58

GDS250 Range (Stainless)

See it working on CD Rom

The **GDS Ground drive spreader range**, capable of spreading all types of material including wet rock salt, grit and sand can achieve application rates of between 5-80 grams/sq metre. Spreading widths of 1.5-10m with the standard gearbox and 3-14m with the high speed gearbox are possible. A unique agitation system, conveyor floor and offset spreading facility ensure wet or dry material can be spread effectively and accurately. Working speeds of up to 15mph and road speeds of up to 30mph mean areas can be covered quickly and efficiently. 465litre capacity hopper. Options include flashing beacon, tonneau cover, flotation wheels and different couplings.



59 LMF MULTI-FEEDER provides an accurate and time saving system of feeding bulk feeds to many classes of livestock. Feed is dropped in measured heaps at spaced intervals allowing stock to gather round head to head avoiding wastage through trampling. Standard capacity approx 320Kg.



60 LMF MULTI-FEEDER fitted with optional Hard Top/Bale Rack. Can be fitted to existing Logic Multi-Feeders. Shown here with optional larger 25 x 10 x 12 wheels, mudguards and livestock fender. Inset shows LBT Round bale trailer - see page 3 picture 10 for more details.



61 LMF TANDEM AXLE MULTI-FEEDER. Shown with hopper extension sides to carry 500Kg. Tandem Axle provides good stability on steep or rough ground. Ideal for larger vehicles. Inset shows Multi-Feeder Control Box featuring on/off switch, digital display of drop quantity and reset button.



62 SLB600 WATERING SYSTEM to quickly dampen down dust on surfaces such as 'all weather' arenas, tracks, roads etc. 600 ltr capacity. can dump 600 ltrs of water in approx 5 minutes. Flower bed and hanging basket watering options are also available. Optional self-fill hose.



63 SLB600 BOWSER supplied as gravity fed or with pump, to allow self fill from a stream etc if required, and to discharge into elevated tanks or troughs. 600ltr capacity, various inlet and outlet pipe options. This unit will easily upgrade to a watering system for all weather surfaces etc.



64 SLB400 LIQUID BOWSER 250ltr capacity, 1.8metre outlet pipe with ¼ turn tap. Provides a multi use carrying system for liquid feeds, water or diesel etc. Various outlets are available to suit applications. Inset shows **SKID UNIT** allowing space for carrying extra feed or equipment.



65 LCF160 CHICK FEEDER mechanises the time consuming job of laying feed onto paper in poultry houses. Features include hopper capacity up to 500kg, adjustable paper holder up to 1000mm width and 12 volt electrical remote on/off control allowing use with various vehicles, eg. Bobcat. One person can prepare a shed with 1500kg of feed in approximately 20 minutes.



66 LGF TRAILED GAME FEEDER Suitable for larger game feeding requirements. Capacity is approx 320kg or approx 500kg with extension hopper. Handles flowable feeds, grain, pellets etc. Adjustable feed rate and geared, 12volt motor driven disc spreads up to approx 3m. Inset shows **EBC-BD12** with 85ltr hopper and 12v belt driven motor to spread up to approximately 4m.

67



THT400 TIMBER HAULER used with an ATV fitted with forestry chains and electric winch provides a compact extraction unit, minimising damage to growing trees. Features include robust construction, adjustment for different timber lengths, minimum overall width, good ground clearance. Ideal for estates and fencing contractors.

68



THT400 TIMBER HAULER shown here easily travelling over awkward ground due to the pivoting tandem axle and compact design. Options include drop sided posts to assist unloading. Inset shows an ATV fitted with **WINXXX ELECTRIC WINCH** for self recovery or timber dragging.

69



THT200 TIMBER HAULER used for extraction of thinnings or large logs especially in difficult or confined areas. It features a winch to assist loading, a gripping cradle turntable allowing good manoeuvrability and swing down legs for easy unloading.

70



MFP FLAIL MOWER RANGE with wheels behind, provides a strong and reliable set up for weed control between trees. **MFP** has a cutting width of 1m or 1.2m and minimal overall width. Engine choice of 13hp and 16hp 'v' twin ensures there is plenty of power to cope with often difficult conditions including cutting fire breaks in heather. See other options on page 4.

71



CHEMICAL WEED CONTROL in nurseries or plantations can be carried out with safety and economy using **CONTACT 2000**. **CTF150** model is 1.5m wide with minimal overall width. Inset **OBS SPRAYER RANGE** gives great flexibility with boom widths, hand lance and hose reel use. Both products promote great savings over traditional hand methods. See range on pages 5, 6 and 7.

72



PB800 POLE BOGIE use with an ATV, Land Rover or similar vehicle can transport difficult objects like long poles with ease. Its design features adjustable gripping chain and removable drawbar to handle practically any length of pole or pipe etc. max. load 500Kg.



73
S300 'A' FRAME the basis of the System 30 can be supplied as a kit or as part of this **S310KC Calf Crate** product. The adjustable frame and installation kit ensure correct mounting. A ¼ turn spring catch releases equipment to be lifted off.



74
ATV035 ATV SAFETY HELMET with removable peak and optional wrap around visor. Developed with backing of the H.S.E. (meets B.S.EN1384). It weighs less than 500gms, impervious, so can be left in the rain, then worn in comfort. Inset shows **ATV034 HELMET** traditional open faced.



75
KOL92145 TANK STORAGE BAGS 2 waterproof pouches each measuring 200 x 254 x 100mm, ideal for keeping all necessities dry and within reach. Spec includes bungee tie downs for a secure fitment to tank. A large external drink holder is also included.



76
ATV WINDSCREENS have been specially designed for ATVs incorporating a stylish glass fibre handlebar fairing which creates an effective brush guard and protection from wind chill. Colour choice allows matching to specific ATVs. Screens are durable perspex with edge trim for added safety.



77
ATV029 SPRAYING KIT PROTECTIVE CLOTHING All you need to comply with H.S.E requirements. Contains face shield, cover all with hood, apron, nitrile gloves, goggles, respirator, nitrile gauntlets and 500 ml bottle of eye irrigation.



78
LTC100 LOGIC TALON CLAMP locks the clamp and the ATV to a concrete floor. Can also be used in a field by preventing the vehicle being driven without extreme difficulty. Approved by NFU and Sold Secure in the UK. Inset shows **ATV058 REVOLVER LOCK**, 1.8m armoured cable core with steel rollers resistant to saws and croppers, covered with vinyl to protect paintwork.



79
STUDED FORESTRY/SNOW CHAINS provide a huge increase in traction especially if tyres are part worn. Wide choice of sizes to fit most suitable ATV wheels.

80



ATV005 HANDLEBAR MUFFS Universal fitting to all ATVs. Durable outer cover with thermal lining, ideal for protection against cold hands – even in Summer. Available in red or black.

81



ATV049 HEATED HANDLEBAR GRIPS for use in cold conditions, simple and effective. Supplied with wiring harness and on/off switch.

82



REPLACEMENT SEAT COVERS For rejuvenating worn or damaged seats. Easy to fit, and available to fit most ATV seats. Logic also offer a refoaming and recovering service.

83



WINXXX ELECTRIC WINCH KIT An essential accessory for self recovery and forestry type applications. Available for ATV and UTV use including model specific fitting brackets. Please specify Make Model and Year of manufacture when enquiring.

84



ATV111 PUNCTURE REPAIR KIT suitable for off-road tubeless tyres only. Save time and money with on-the-vehicle repairs. Kit contains rasp and needle tools, repair strips and glue solution.

85



WHEELS, AXLES, COUPLINGS Logic ATV Equip offer a large range of off-road wheels, road wheels, mudguards, stub axles, suspension axles, braked axles, pivot couplings and standard couplings. Inset shows **TB100 TOW BALL** 50mm diameter with $\frac{3}{4}$ " thread and nyloc nut, narrow neck for maximum articulation, includes 10mm hex slot to assist fitting.

86



LOGIC PRO-SAMP is a fully automatic, electro hydraulic soil sampling unit mounted on a Kawasaki 300cc 4 x 4 ATV giving L.G.P. and go anywhere ability. It enables work rates 8 times faster than hand methods with accuracy and economy. Used by Water Authorities, Research Groups and Contractors.

87



KOL20051 GUN BOOT IV features a heavy-duty black polypropylene shell with removable and replaceable cushioned lining. The design accommodates shotguns and rifles with right or left hand bolt actions, scopes up to 50mm and attached slings. Inset shows **KOL20029 GUN BOOT IV** one-piece, high density fibreglass reinforced bracket, which secures gun boot in place with pin clip.

88



KOL20035 BOOTTECTOR BRACKET for the Gun Boot IV case, which has been designed to release more carrying rack space without compromising on gun boot security. The bracket fits most carrying racks and adjusts without the need for any tools.

89



KOL20090 GUN BOOT 5 TRANSPORT A complete firearm and storage transport system with soft "case within a case" and built-in mounting bracket. Its polypropylene shell provides heavy duty protection with room for 50mm scopes or rifles with slings attached and bracket adjusts without any tools. The internal soft case features reinforced padding, waterproof zipper and carry handle.

90



KOL20085 GEAR GRIPS designed to grip any implement such as shotgun, rifle, poles, shovel etc with a maximum grip of up to 100mm. Simple push button release mechanism to quickly release items. A very versatile and secure gripping system.

91



KOL20072 GUN GRIPS a simple gun grip designed to hold any gun in the V of the grip.

92



KOL20073 UTV GUN RACK designed for safe and secure mounting in UTVs. Specification includes rubber strap to keep firearm secure and eliminate any vibration or movement. Insets show **KOL20074 UTV riser plate** required for UTVs with centre hump.

93



KOL93640 SEAT COVER fits most ATVs, elastic sure fit design with rugged 900 denier nylon for long wear. A simple replacement or protection for a new seat.

94



KOL95107, KOL95110 ATV COVERS available in black or green, features a durapoly nylon construction with reinforced corners, winch gusset & tie down grommets. (KOL95104 - XXL cover available)

95



KOL96850 ATV RECOVERY STRAP 15ft in length, forged steel hooks with safety clips with a 10,000lb rating.

KOLPIT

Accessories

96



KOL53200 UTV BASKET 900 x 175 x 175mm compatible with most UTV models and attaches easily to rear mesh or centre roll bar tubing. An ideal place for storing small items without interfering with any features of your UTV.

97



KOL91710 BUCKET HUGGER / CONTOURED CARGO TRAY measuring 900 x 450 x 250 is designed to hold 25lt buckets, tools and gun grips. It features reinforced polypropylene double walled construction, with drain holes and large carrying handles.

98



KOL93200 CONTOURED CARGO BOX, KOL93100 FRONT / REAR GEAR BOX provide great storage options. Both are hard-sided, reinforced polypropylene construction, with recessed "Cam-Lock" catches to prevent snagging. Lids feature weathertight seals to protect contents from dust and mud etc. and will accept a standard lock for extra security.

99



KOL93510 CARGO BAG, KOL93530 FRONT / REAR LUGGAGE both options feature heavy duty water repellent exterior material with black nylon lining. Collapsible design allows luggage to lay flat or keep in standing position and all zippers prevent ingress of debris.

YOUR LOCAL DEALER

NORTH & EXPORT

LOGIC MANUFACTURING LTD

Foundry Industrial Estate, Bridge End
Hexham, Northumberland NE46 4JL

Tel: (01434) 606661 Fax: (01434) 608143

E-mail: sales@logic.gb.com

SOUTH

LOGIC MH LTD - New Whiteway Works, Fossecross
Industrial Estate, Chedworth, Cheltenham
Gloucestershire. GL54 4NW

Tel: (01285) 720930 Fax: (01285) 720840

E-mail: sales@logic.gb.com

SALES HOTLINE: 08450 500555

website: www.logic.gb.com

